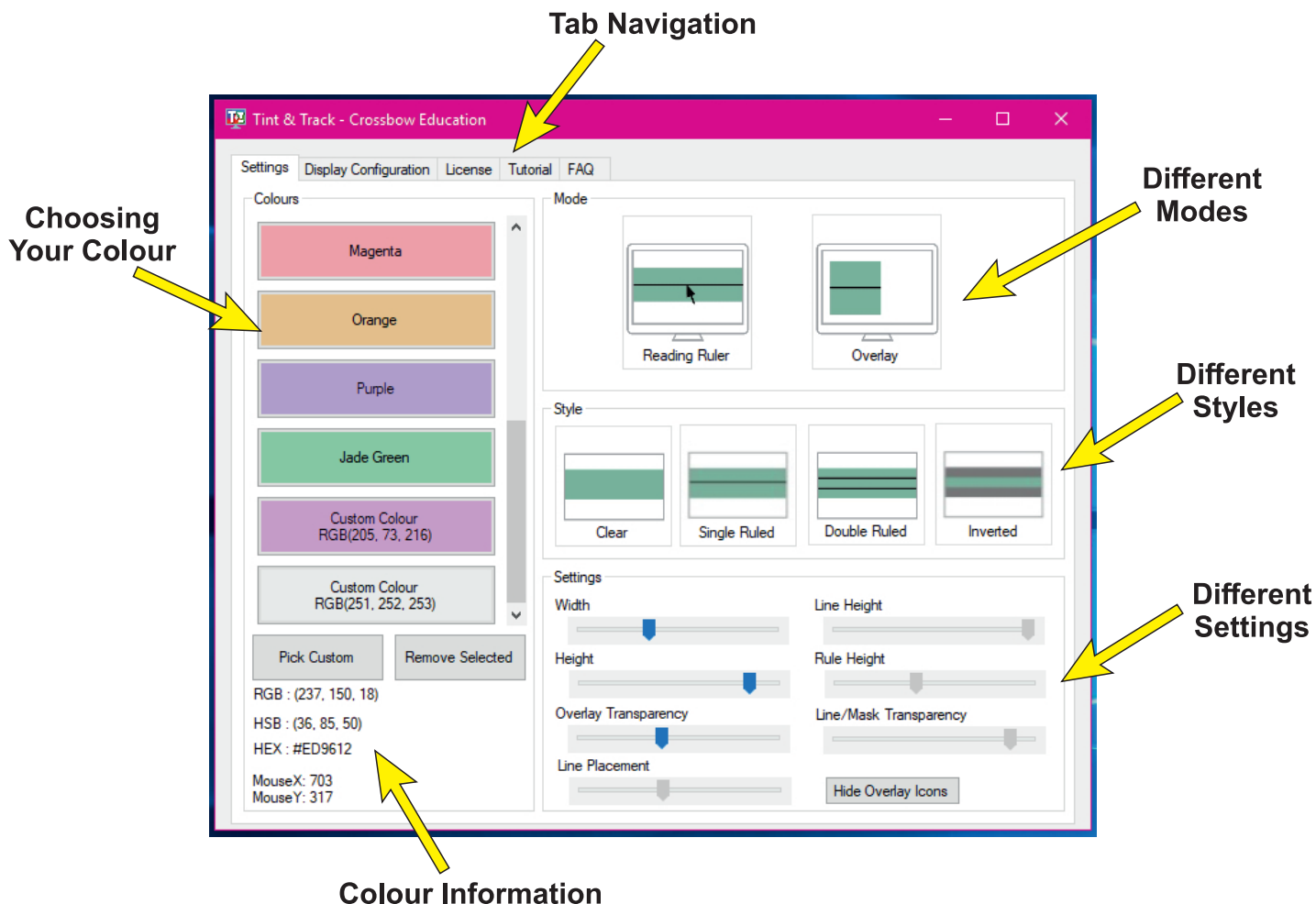


a more comfortable reading experience

# **User Manual**

# Contents

➤ System Requirements.....	p2
➤ Installation Guide.....	p3
➤ Licencing Tint and Track.....	p4
➤ Choosing Your Colour.....	p5
➤ Different Modes.....	p6
➤ Different Styles.....	p7
➤ Different Settings.....	p8
➤ Tutorial and FAQ Tabs.....	p9



## System Requirements


- **Disc Space Required:** 250mb
- **Operating Systems:** Windows 8, 10 or higher (it may work on operating systems before, however we cannot provide support for anything lower than Windows 10).
- **Compatibility:** NET Framework 3.5 or higher (if at installation time you do not have this framework installed, the Tint and Track installer will prompt to download/install it for you).
- **Internet connection** is required to authenticate Tint and Track on the first use of the software, after this it can be used offline as well.

# Installation Guide

**\*\* No Installation is required for the portable version, as it runs from the USB stick.\*\***

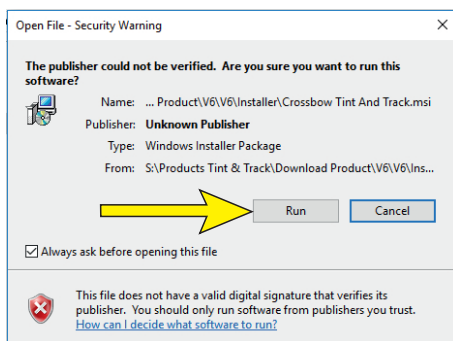
## Step 1

Click on 'Crossbow Tint and Track' to run the installer.

Name	Type	Size
program files	File folder	
0x0409	Configuration settings	22 KB
 Crossbow Tint And Track	Windows Installer Package	1,811 KB
setup	Application	1,263 KB
Setup	Configuration settings	6 KB

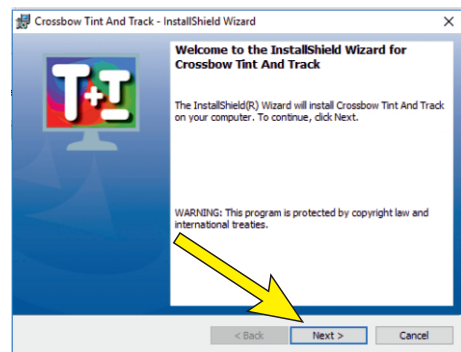
## Step 2

If you get the following pop up box:  
Click 'Run'



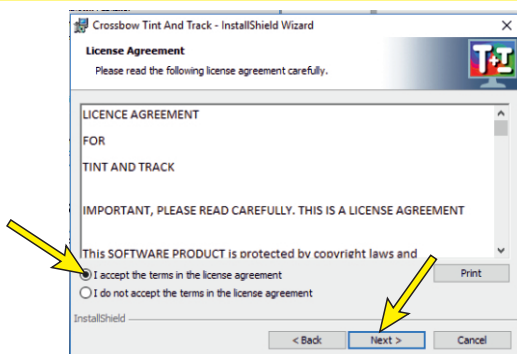
## Step 3

Click 'Next'



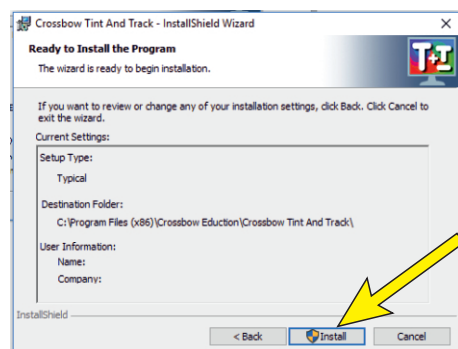
## Step 4

Read the terms of our licence agreement -  
Select that you accept the terms - Click 'Next'



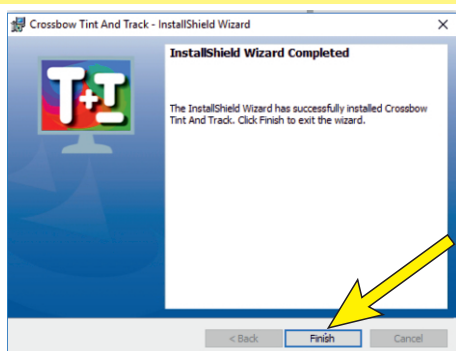
## Step 5

Click 'Install'



## Step 6

Click 'Finish': Installation is complete.

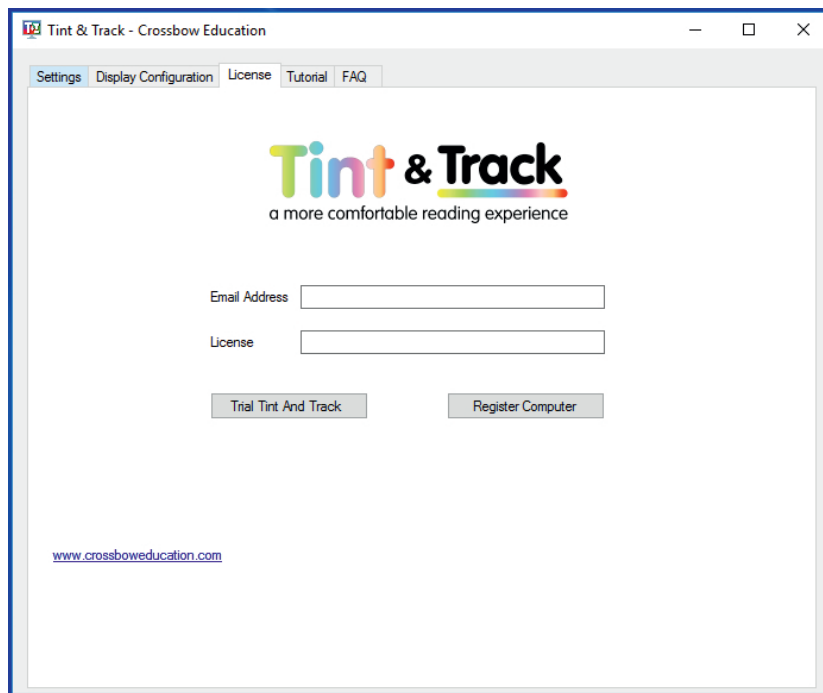


**Licence Tint and Track**

See next page

## Licencing Tint and Track

- Enter in your email address into the 'Email Address' Section.
- Enter your licence key in the 'Licence' section.
- Click 'Register Computer' button.



## Unlinking Your Computer with Tint and Track

If you are using Tint and Track on more than one computer and do not have our portable version or have only purchased one licence, you can use it on more than one computer through the unlink button.

This button is found in the licence tab of tint and track.

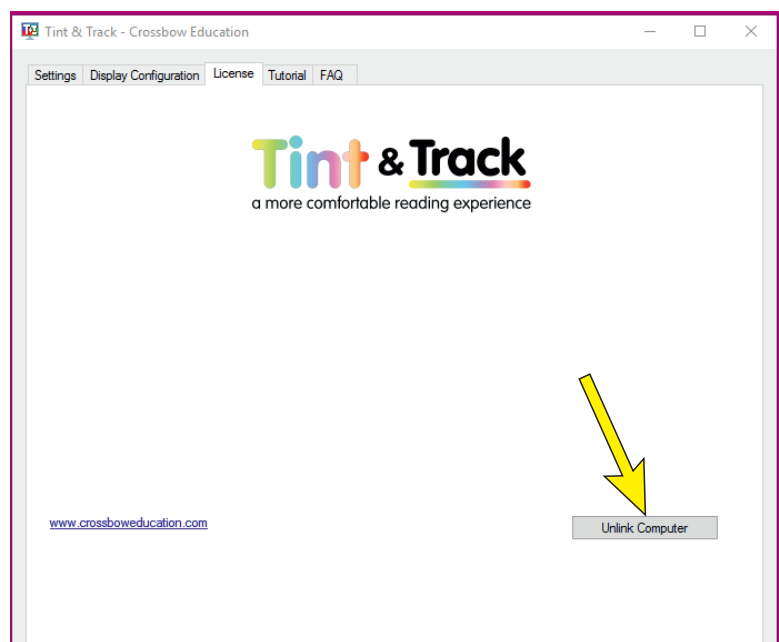
Pressing this button unlinks your computer with your licence key meaning you can use this licence on another machine.

If you buy a new computer, make sure to unlink your old computer with this button before re-entering your licence key on your new computer.



Save your licence key on a file so you can easily access it when switching between computers.

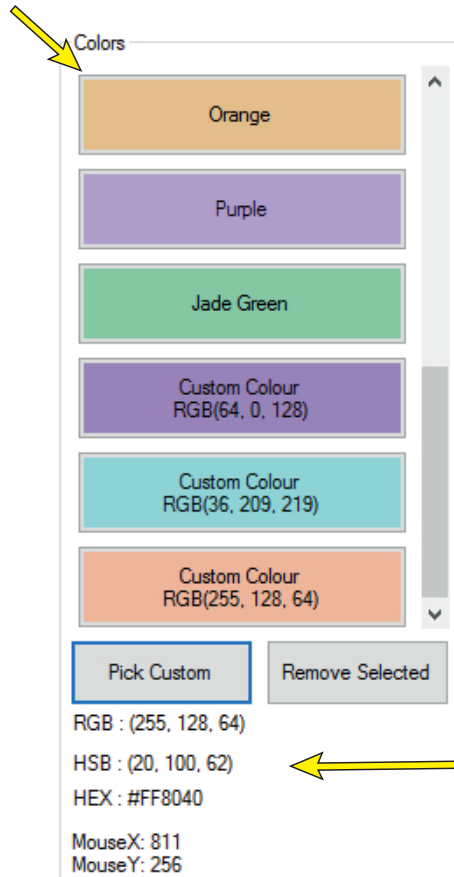
You will only need to install it onto the computers you switch between once.





# Choosing Your Colour

## Colour list

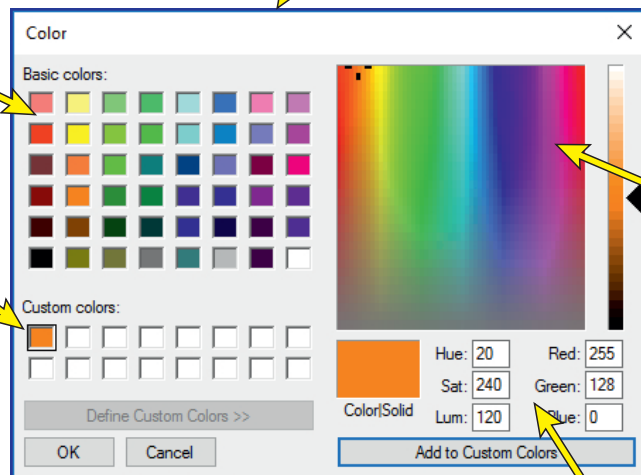


## Basic colours range

## Colour square

## Colour information

## Colours pop-up box



## Infinity colours range

## Colour information

To choose the perfect colour you have two options:

- Select a Crossbow visual stress range colour.
- Select a custom colour.

### Selecting a Crossbow visual stress range colour:

If you have been tested for visual stress and know your Crossbow colour you can pick from our 10 colours matching our visual stress range shown in the colour list.

### Selecting a custom colour:

- ✦ Select the 'Pick Custom' button.
- ✦ The colours pop-up box appears:
  - ✦ Here you can see the basic colours range.
  - ✦ Click the button 'Define Custom Colours >>' and you get the infinity colours range.
  - ✦ Choose your colour by selecting a colour from the basic range and editing it in the infinity options.
  - ✦ Once you have chosen your colour, click on a colour square and click 'Add to Custom Colours'.
  - ✦ This colour will be added to the square you have selected.
  - ✦ You can add as many colours as you like.
  - ✦ Highlight the coloured square you want to add to Tint and Track and press 'OK'.
  - ✦ This will add the colour to your colour list in Tint and Track. You can add as many custom colours to this list as you like.
- ✦ If you want to remove a custom colour you have added:
  - ✦ select the custom colour you want to remove
  - ✦ click the 'Remove Selected' button.



If you want to know the RGB or HEX number of your colour this can be found at the colour information points shown.

# Different Modes

There are two modes in Tint and Track:

- Reading Ruler Mode
- Overlay Mode



## Reading Ruler Mode:

- ✦ This mode moves with your cursor.
- ✦ This mode is most useful when you want to use the tracking line, for example when you are working on a spreadsheet, or while you are reading.

This mode has one icon on it: the lock icon.

- ✦ Once pressed this detaches the ruler from the cursor, locking the ruler into position.
- ✦ This means that you can move your mouse around the screen, but the ruler stays locked in the position you left it, so you don't lose your position.
- ✦ Pressing this button again attaches the ruler back to your cursor.

12422	United Kingdom	44	Preston	(0)1772			
12423	United Kingdom	44	Ripley	(0)1773			
12424	United Kingdom	44	Spalding	(0)1775			
12425	United Kingdom	44	Stranraer	(0)1776			
12426	United Kingdom	44	Retford	(0)1777			
12427	United Kingdom	44	Bourne	(0)1778			
12428	United Kingdom	44	Peterhead	(0)1779			
12429	United Kingdom	44	Stamford	(0)1780			
12430	United Kingdom	44	Stoke-on-Trent	(0)1782			
12431	United Kingdom	44	Staines	(0)1784			
12432	United Kingdom	44	Stafford	(0)1785			
12433	United Kingdom	44	Stirling	(0)1786			
12434	United Kingdom	44	Sudbury	(0)1787			
12435	United Kingdom	44	Rugby	(0)1788			
12436	United Kingdom	44	Stratford-upon-Avon	(0)1789			
12437	United Kingdom	44	Spilsby	(0)1790			
12438	United Kingdom	44	Swansea	(0)1792			
12439	United Kingdom	44	Swindon	(0)1793			
12440	United Kingdom	44	Romsey	(0)1794			
12441	United Kingdom	44	Sittingbourne	(0)1795			
12442	United Kingdom	44	Pitlochry	(0)1796			

Lock Icon

## Overlay Mode:

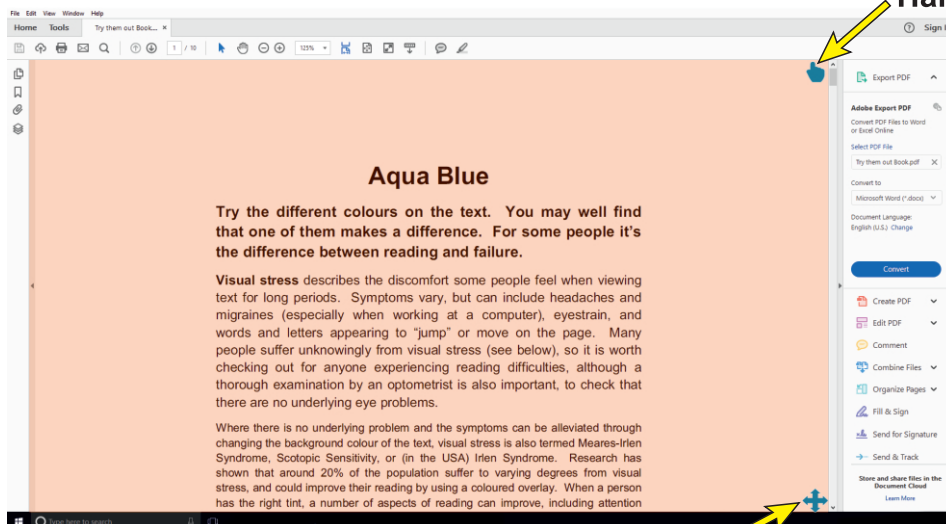
- ✦ This mode is static on the screen.
- ✦ This mode is most useful for when you want to tint the whole, or part of the screen.

This mode has two icons:

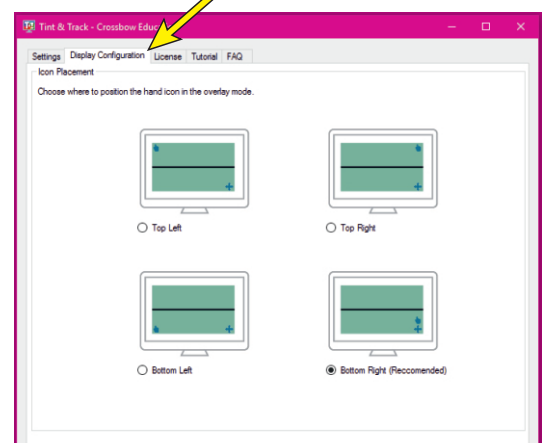
- ✦ The resize icon: holding and dragging this easily changes the height and width of the overlay.
- ✦ The hand icon: holding and dragging this moves the overlay's position on the screen.
  - ✦ The position of this icon can be moved by going to the display configuration tab.
- ✦ When using a touch screen to enable these icons press them for a couple of seconds first.
- ✦ If you do not want to use these icons, they can be hidden using the 'Hide Overlay Icons' button in settings.

Hand Icon

Display Configuration Tab



Resize Icon



# Different Styles

There are 4 different styles in Tint and Track

- Clear
- Single Ruled
- Double Ruled
- Inverted



## Clear Style:

- ✦ Tints the screen without any tracking assistance.

United Kingdom	44 Stranraer	(0)1776			
United Kingdom	44 Retford	(0)1777			
United Kingdom	44 Bourne	(0)1778			
United Kingdom	44 Peterhead	(0)1779			
United Kingdom	44 Stamford	(0)1780			
United Kingdom	44 Stoke-on-Trent	(0)1782			
United Kingdom	44 Staines	(0)1784			
United Kingdom	44 Stafford	(0)1785			
United Kingdom	44 Stirling	(0)1786			
United Kingdom	44 Sudbury	(0)1787			
United Kingdom	44 Rugby	(0)1788			
United Kingdom	44 Stratford-upon-Avon	(0)1789			
United Kingdom	44 Spilsby	(0)1790			
United Kingdom	44 Swansea	(0)1792			
United Kingdom	44 Swindon	(0)1793			
United Kingdom	44 Romsey	(0)1794			
United Kingdom	44 Sittingbourne	(0)1795			
United Kingdom	44 Pitlochry	(0)1796			
United Kingdom	44 Rye	(0)1797			
United Kingdom	44 Pulborough	(0)1798			
United Kingdom	44 Saffron Walden	(0)1799			

## Single Ruled Style:

- ✦ This style has a single tracking line.
- ✦ You can keep it thin for easy tracking or you can increase the line height so that it blocks out more.
- ✦ The line placement can also be adjusted (see settings on next page).

12422 United Kingdom	44 Preston	(0)1772			
12423 United Kingdom	44 Ripley	(0)1773			
12424 United Kingdom	44 Spalding	(0)1775			
12425 United Kingdom	44 Stranraer	(0)1776			
12426 United Kingdom	44 Retford	(0)1777			
12427 United Kingdom	44 Bourne	(0)1778			
12428 United Kingdom	44 Peterhead	(0)1779			
12429 United Kingdom	44 Stamford	(0)1780			
12430 United Kingdom	44 Stoke-on-Trent	(0)1782			
12431 United Kingdom	44 Staines	(0)1784			
12432 United Kingdom	44 Stafford	(0)1785			
12433 United Kingdom	44 Stirling	(0)1786			
12434 United Kingdom	44 Sudbury	(0)1787			
12435 United Kingdom	44 Rugby	(0)1788			
12436 United Kingdom	44 Stratford-upon-Avon	(0)1789			
12437 United Kingdom	44 Spilsby	(0)1790			
12438 United Kingdom	44 Swansea	(0)1792			
12439 United Kingdom	44 Swindon	(0)1793			
12440 United Kingdom	44 Romsey	(0)1794			
12441 United Kingdom	44 Sittingbourne	(0)1795			
12442 United Kingdom	44 Pitlochry	(0)1796			

12429 United Kingdom	44 Stamford	(0)1780			
12430 United Kingdom	44 Stoke-on-Trent	(0)1782			
12431 United Kingdom	44 Staines	(0)1784			
12432 United Kingdom	44 Stafford	(0)1785			
12433 United Kingdom	44 Stirling	(0)1786			
12434 United Kingdom	44 Sudbury	(0)1787			
12435 United Kingdom	44 Rugby	(0)1788			
12436 United Kingdom	44 Stratford-upon-Avon	(0)1789			
12437 United Kingdom	44 Spilsby	(0)1790			
12438 United Kingdom	44 Swansea	(0)1792			
12439 United Kingdom	44 Swindon	(0)1793			
12440 United Kingdom	44 Romsey	(0)1794			
12441 United Kingdom	44 Sittingbourne	(0)1795			
12442 United Kingdom	44 Pitlochry	(0)1796			
12443 United Kingdom	44 Rye	(0)1797			
12444 United Kingdom	44 Pulborough	(0)1798			
12445 United Kingdom	44 Saffron Walden	(0)1799			
12446 United Kingdom	44 Torquay	(0)1803			
12447 United Kingdom	44 Torrington	(0)1805			
12448 United Kingdom	44 Shetland	(0)1806			
12449 United Kingdom	44 Ballindalloch	(0)1807			

## Double Ruled Style:

- ✦ This style has two tracking lines to read in between.
- ✦ This style gives more guidance for the individual than the single tracking line as you are focussing your eyes into one point, stopping your eyes from drifting around the page.
- ✦ All settings can be adjusted (see settings on next page).

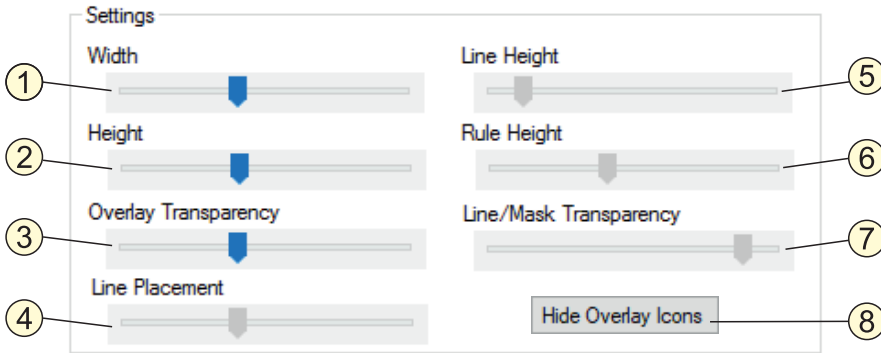
12422 United Kingdom	44 Preston	(0)1772			
12423 United Kingdom	44 Ripley	(0)1773			
12424 United Kingdom	44 Spalding	(0)1775			
12425 United Kingdom	44 Stranraer	(0)1776			
12426 United Kingdom	44 Retford	(0)1777			
12427 United Kingdom	44 Bourne	(0)1778			
12428 United Kingdom	44 Peterhead	(0)1779			
12429 United Kingdom	44 Stamford	(0)1780			
12430 United Kingdom	44 Stoke-on-Trent	(0)1782			
12431 United Kingdom	44 Staines	(0)1784			
12432 United Kingdom	44 Stafford	(0)1785			
12433 United Kingdom	44 Stirling	(0)1786			
12434 United Kingdom	44 Sudbury	(0)1787			
12435 United Kingdom	44 Rugby	(0)1788			
12436 United Kingdom	44 Stratford-upon-Avon	(0)1789			
12437 United Kingdom	44 Spilsby	(0)1790			
12438 United Kingdom	44 Swansea	(0)1792			
12439 United Kingdom	44 Swindon	(0)1793			
12440 United Kingdom	44 Romsey	(0)1794			
12441 United Kingdom	44 Sittingbourne	(0)1795			
12442 United Kingdom	44 Pitlochry	(0)1796			

## Inverted Style:

- ✦ This style blocks out everything apart from where you are reading.
- ✦ This style helps if you get distracted by everything else on the page as it focuses solely on the point you are reading.
- ✦ All settings can be adjusted (see settings on next page).

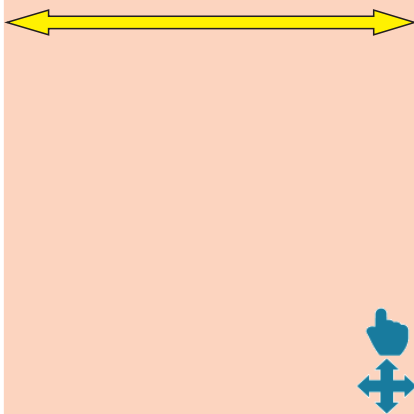
12422 United Kingdom	44 Preston	(0)1772			
12423 United Kingdom	44 Ripley	(0)1773			
12424 United Kingdom	44 Spalding	(0)1775			
12425 United Kingdom	44 Stranraer	(0)1776			
12426 United Kingdom	44 Retford	(0)1777			
12427 United Kingdom	44 Bourne	(0)1778			
12428 United Kingdom	44 Peterhead	(0)1779			
12429 United Kingdom	44 Stamford	(0)1780			
12430 United Kingdom	44 Stoke-on-Trent	(0)1782			
12431 United Kingdom	44 Staines	(0)1784			
12432 United Kingdom	44 Stafford	(0)1785			
12433 United Kingdom	44 Stirling	(0)1786			
12434 United Kingdom	44 Sudbury	(0)1787			
12435 United Kingdom	44 Rugby	(0)1788			
12436 United Kingdom	44 Stratford-upon-Avon	(0)1789			
12437 United Kingdom	44 Spilsby	(0)1790			
12438 United Kingdom	44 Swansea	(0)1792			
12439 United Kingdom	44 Swindon	(0)1793			
12440 United Kingdom	44 Romsey	(0)1794			
12441 United Kingdom	44 Sittingbourne	(0)1795			
12442 United Kingdom	44 Pitlochry	(0)1796			

# Different Settings



**i** The program will automatically remember your settings so if you leave the program and come back, your settings will be restored.

- ① **Width:** Moving this slider adjusts the overall width (only applies to Overlay mode).



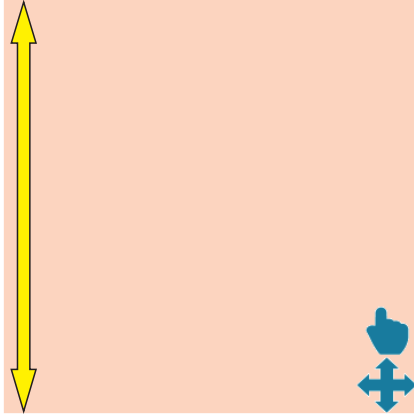
- ⑤ **Line Height:** Moving this slider adjusts the height of the tracking line (only applies to single and double ruled styles).



- ⑥ **Rule Height:** Moving this slider adjusts the height of the visible tracking area (only applies to double ruled and inverted styles).



- ② **Height:** Moving this slider adjusts the overall height.



- ③ **Overlay Transparency:** Moving this slider reduces/increases the depth of the overlay transparency.



- ④ **Line Placement:** Moving this slider adjusts where the line sits on the y axis of the screen (only applies in the single line style).



- ⑦ **Line/Mask Transparency:** Moving this slider adjusts the colour transparency of the lines and masks.

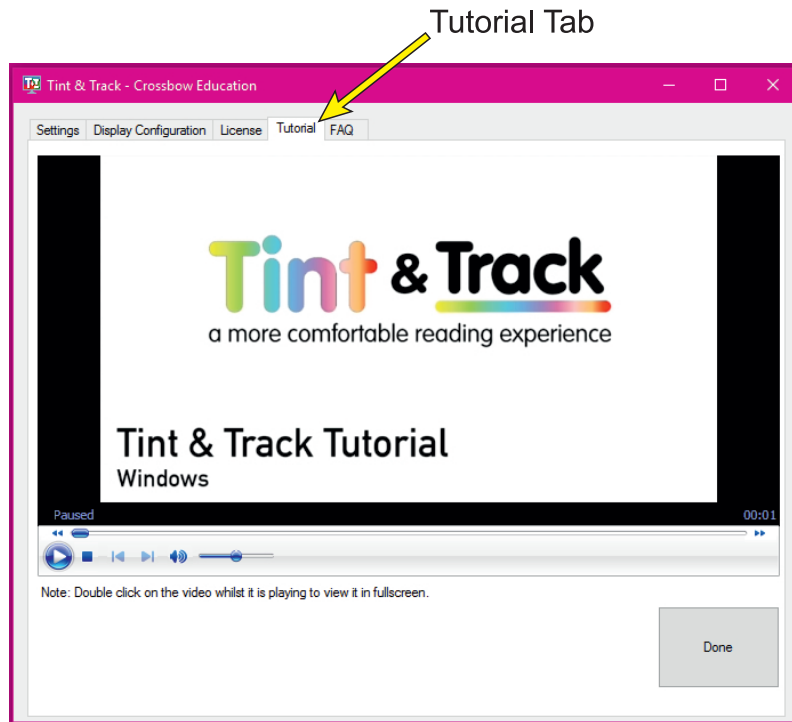
- ⑧ **Hide Overlay Icons:** Clicking this hides the overlay icons. Please note, while the icons are hidden the functionality of the icons is also removed.

To make the icons visible again please re-click the button.

## Tutorial Tab

This video is automatically played on the first time of opening the software however if you want to watch the video again, or have a visual guide on what is covered in this manual click on the 'Tutorial' tab in the software.

To make the video go full screen double click on it.



## FAQ Tab

Under the FAQ tab you will find some helpful answers to some common queries asked. If you have any additional questions please contact us on either:

- ✦ Telephone: 0845 269 7272
- ✦ Email: [support@crossboweducation.co.uk](mailto:support@crossboweducation.co.uk)

